

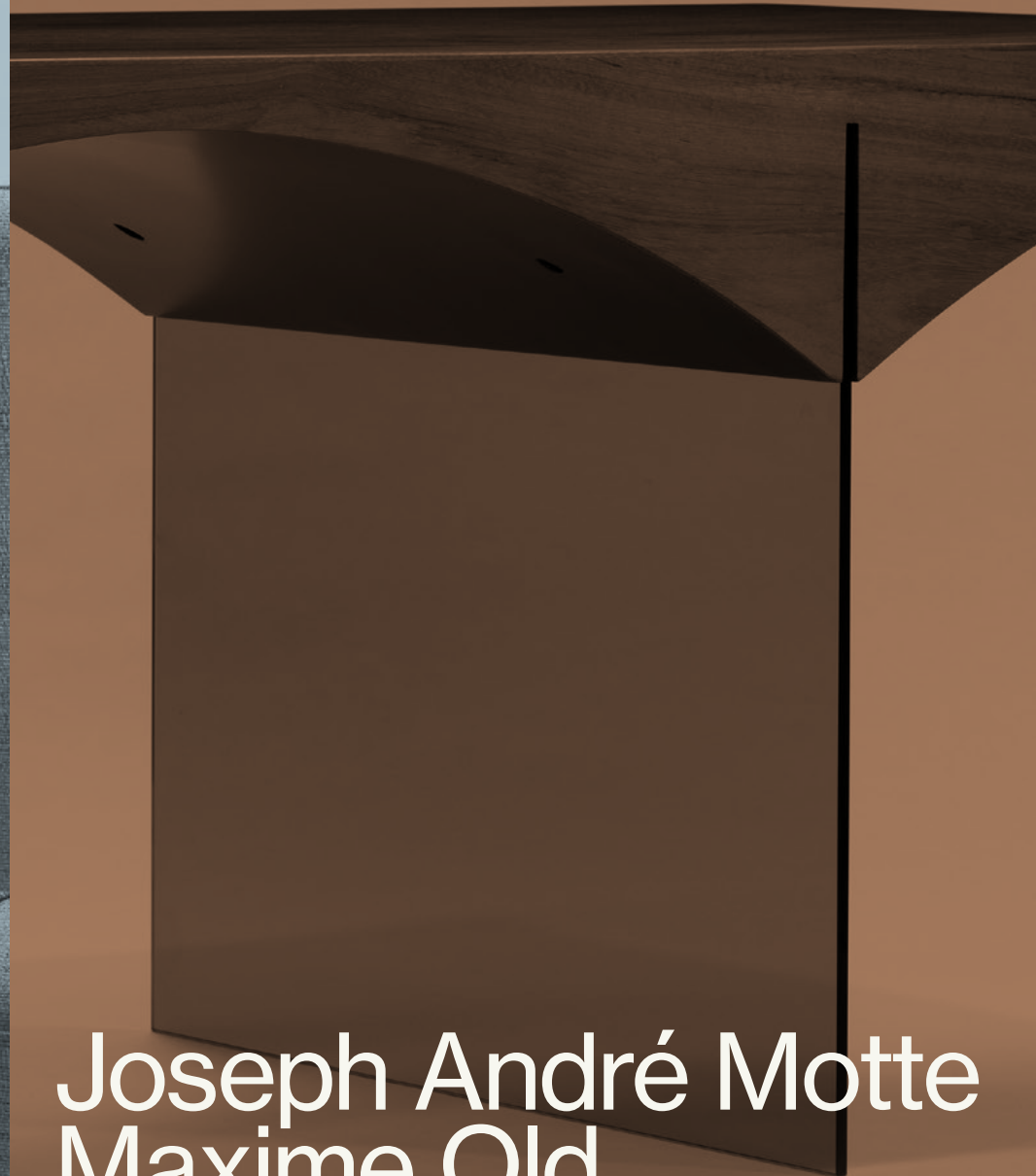
# TEFAF Maastricht

June 24 – 30, 2022

MECC Stand#608



DEMISCH DANANT



Joseph André Motte  
Maxime Old  
Eugène Leroy  
Francis Jourdain

# TEFAF Maastricht 2022

## June 24 – 30, 2022

This year for TEFAF Maastricht 2022, we are extremely pleased to return to the fair with a selection of rare and unique designs from two important French interior designers of the 1950s and 1960s: Joseph-André Motte (1925–2013) and Maxime Old (1910–1991). Motte and Old, despite their age difference, were colleagues and friends. With a mutual respect for one another, they often collaborated to organize various Salon des Artistes Décorateurs (SAD), of which both were actively involved.

Over the course of his career, Joseph-André Motte had mostly produced models for industry as well as important models for prestigious public commissions. He was not actively involved in creating furniture for private clients commissioned for their specific environments, which makes his rare *Dining Table with Extensions* and *Pair of Wall Cabinets*, both c. 1965, of special interest. We present these pieces here for the first time.

In 1965–1966, Motte designed the Paris apartment of Mr. and Mme. Stelin. For their dining room, he created a multi-functional five-meters long wall cabinet in Palisander and Sycamore and a dining table comprised of the same wood and with an impressive base in bronze. The bronze base is signed by Motte and dedicated to the client – the first time we see this in a Motte work, revealing the importance of this historic commission and the special relationship between designer and client.

Also by Motte, we are showing *Directional Desk* (1966) in satinwood with smoked glass legs. Only two desks are known to have been produced: one he designed for the director's office of Dunkerque's seaport in 1967, and our desk. While the integration of glass into furniture is typical of this era in the 1960s, the arch shape of this desktop is unique and quite elegant as it is suspended by two





smoked glass pieces. The desk will be accompanied by the very rare '*Confort*' Desk Chair, Model 3001 (1964) by Antoine Philippon and Jacqueline Lecoq from the series designed for Les Huchers-Minvielle. Our particular model is even more rare with its unusual high back.

Alongside Motte's pieces is a rare, chromed metal and marble Desk Lamp by Marc Held from c.1968. Never produced commercially, these lamps were only made for specific projects and installations. To culminate the chapter dedicated to Motte we are also bringing the now iconic *Light Table* (1958), designed for Charron in Palisander and lacquered wood with opaline glass. This design is an example of Motte's attempt to integrate light into furniture and architecture in order to avoid the regular sources of light coming from floor and table lamps.

Motte works will be paired with a selection of Maxime Old pieces that will be shown for the first time. Maxime Old belongs to an older generation of decorators than Motte, and only worked for private and public commissions. *Salon Sofa, Model 369* (1957) has a waxed wild Cherry wooden structure and a remarkable, sculptural V-shaped back support. We were familiar with the model from archival photographs of its 1959 presentation at the Salon des Artistes Décorateurs, but we never had a chance to see a real one before acquiring one during the pandemic. Our sofa came from a private commission made in 1957 and was kept by the family until now.

The sofa is complemented by *Pair of Armchairs, Model 369* (1957). This model was originally designed for the famous Hotel Marhabata in Casablanca in 1953–1954, and presented in 1954 at the Salon des Artistes Décorateurs. Our selection of chairs was purchased directly from Maxime Old in 1956 by the same client who commissioned the *Salon Sofa*.





Also by Maxime Old is a rare *Set of 4 'Conseil' Chairs* in Birch wood and fabric. This model was designed for the *Salle du Conseil Municipal de l'Hotel de Ville de Rouen* in 1963. We will be presenting these chairs with the *Motte dining table* as both are from the same period and with the same level of superb quality.

Alongside these two main groupings of works, we will also show rare lighting from the French company *Disderot*, including a 1960 *J-2 Floor Lamp* by *Motte* in a rare version with its original textile shade, a *B1 Floor Lamp* (1956) by *René-Jean Caillette*, a rare *André Simard ES 2 Table Lamp* (c.1956) made of a *Rotaflex* shade and lacquered metal, and an even more rare *KR5 Ceiling Lamp* (1960) in Mahogany and satin glass by *Janine Abraham* and *Dirk Jan Rol*, of which very few were produced at that time.

Our presentation concludes with a selection of paintings by French painter *Eugène Leroy* with a focus on the 1950s and 1960s, which are the earlier decades of his rich and long career. *Demisch Danant* has presented *Eugène Leroy* works for the past two years at *TEFAF Maastricht* and *TEFAF New York*. This new selection of works precedes a larger show we will organize in our New York gallery in the fall of this year.



Maxime Old

---

*Salon Sofa,  
Model 369, 1957*

---

Waxed wild cherry,  
foam, fabric, patinated  
brass, leather

---

33.86 H × 78.74  
× 30.71 inches  
86 H × 200 × 78 cm

---

Seat height:  
15 inches (38 cm)

---

**Provenance:**

Private collection, Paris  
Commissioned directly from  
the artist, thence by descent

---

**Exhibited:**

*41st Salon des Artistes Décorateurs.*  
1959, Grand Palais, Paris.

---

**Literature:**

Badetz, Yves. *Maxime Old:  
Architecte-Décorateur.*  
Paris, Norma, 2000, pp.  
236, 238-239, 247. Print.

---









TEFAF Maastricht

June 24 – 30, 2022

Maxime Old

---

*Pair of Armchairs,  
Model 369, 1957*

---

Waxed wild  
cherry, foam, fabric

---

33.86 H × 27.56  
× 30.71 inches  
86 H × 70 × 78 cm

---

Seat height:  
15.75 inches (40 cm)

---

**Provenance:**

Private collection, Paris  
Commissioned directly from  
the artist, thence by descent

---

**Exhibited:**

*38th Salon des Artistes décorateurs.*  
18 May - 4 Jul. 1954, Grand Palais,  
Paris. Similar model presented.

---

**Literature:**

Badetz, Yves. *Maxime Old:  
Architecte-Décorateur.*  
Paris, Norma, 2000, p.202. Print.

---







René-Jean Caillette

---

*B1 Floor Lamp*

Wood, tubular  
brass, shade

---

43.31 H × 9.45 D inches

110 H × 24 D cm

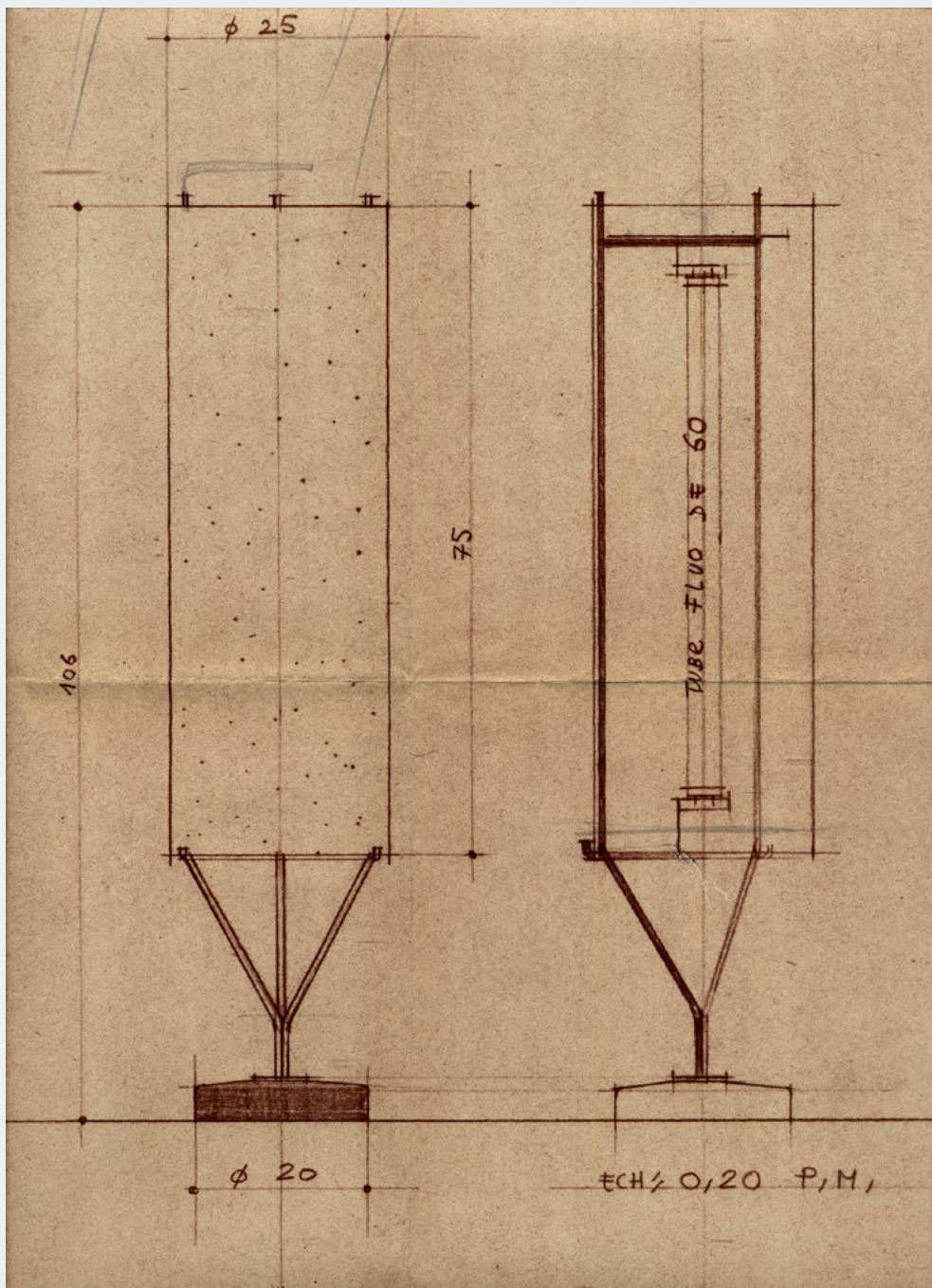
---

Edition Disderot

---







TEFAF Maastricht



June 24 – 30, 2022

André Simard

*ES 2 Table Lamp*, c. 1956

Lacquered metal, Rotaflex

17.72 H × 8.27 D inches

45 H × 21 D cm

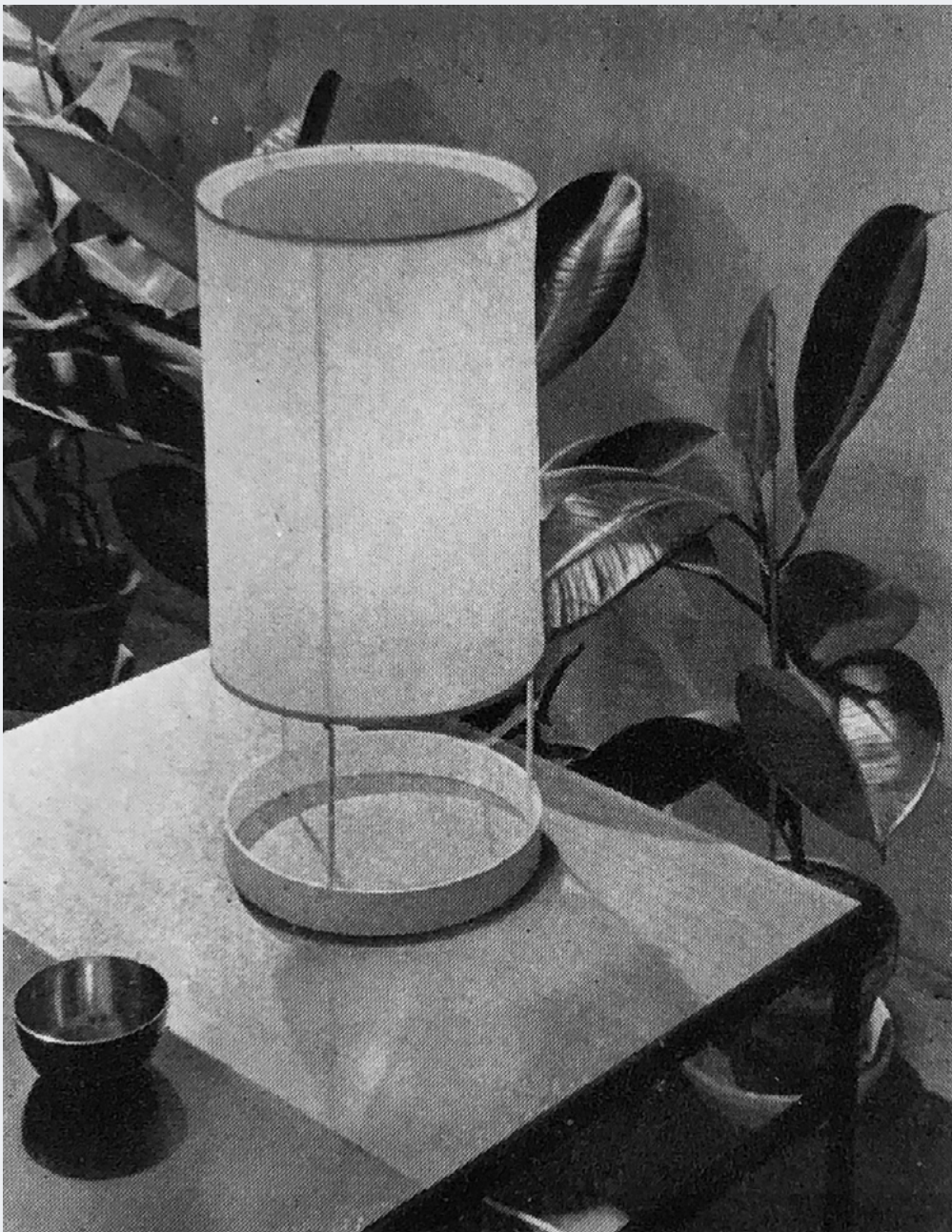
Edition Disderot

**Literature:**

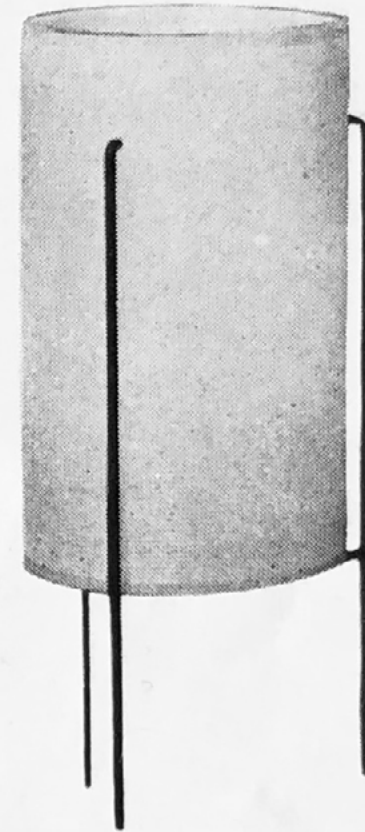
*Catalogue*. Paris, Éditions Pierre Disderot, c. 1956, Similar model presented. Print.







**ES 2** – Cylindre ROTAFLEX, sur piètement en métal laqué blanc. Equipé, douille, fil et fiche.  
Hauteur 450 – Diamètre 210.



**R 15** – Cylindre ROTAFLEX, sur piètement en métal laqué noir. Equipé, douille, fil et fiche.  
Hauteur 350 – Diamètre 145.

Maxime Old

---

Set of 4 "Conseil"  
Chairs, 1963

---

Birch, foam, fabric

---

34.65 H × 22.83

× 19.69 inches

88 H × 58 × 50 cm

---

Seat height:  
18.1 inches (46 cm)

---

Original model designed for  
the Salle du Conseil Municipale  
de l'Hotel de Ville de Rouen, 1963.

---

#### Literature:

Badetz, Yves. *Maxime Old:  
Architecte-Décorateur*. Paris,  
Norma, 2000, p.265. Print.

---







TEFAF Maastricht



June 24 – 30, 2022

Francis Jourdain

---

*Gueridon*, c. 1920

---

Walnut, burr walnut

---

17.72 H × 19.69 D inches

45 H × 50 D cm

---

Stamped "FJ"  
on underside

---







TEFAF Maastricht

June 24 – 30, 2022

Joseph-André Motte

---

*Dining Table  
with Extensions*, c. 1965

---

Bronze, Santos Palisander

---

31.5 × 58.66 × 58.66 inches  
80 H × 149 × 149 cm

---

Extended lengths: 70.5 or  
78.4 inches (179 or 199 cm)

---

Engraved on base  
“Pour M. Stellin,  
J.A. Motte Decorateur”

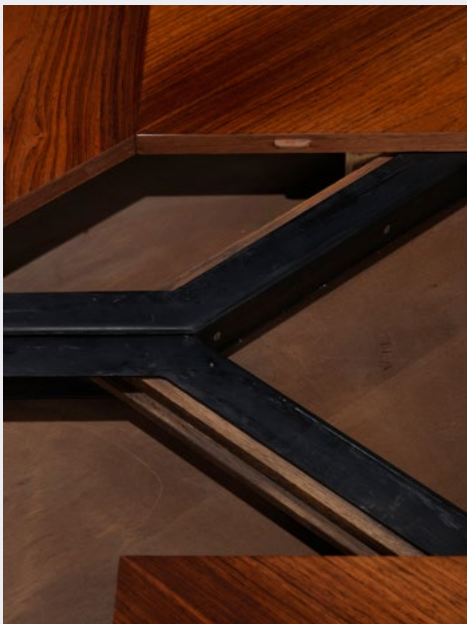
---

Provenance:  
Private commission, Paris

---







Joseph-André Motte

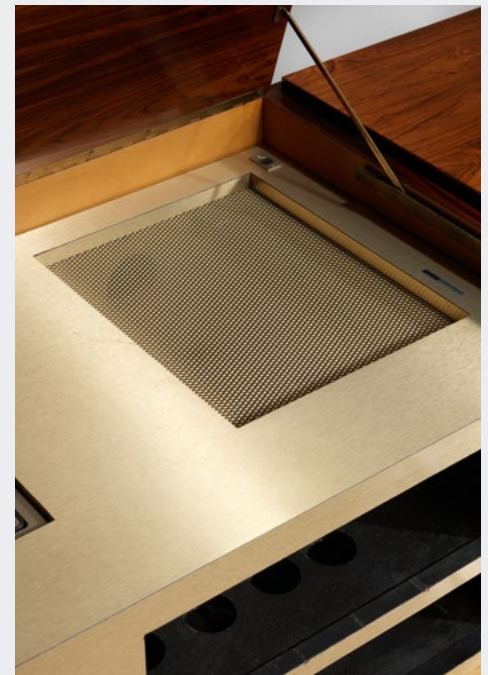
*Pair of Wall Cabinets,*  
c. 1965

Santos Palisander,  
sycamore, Plexiglas,  
anodized aluminum, brass

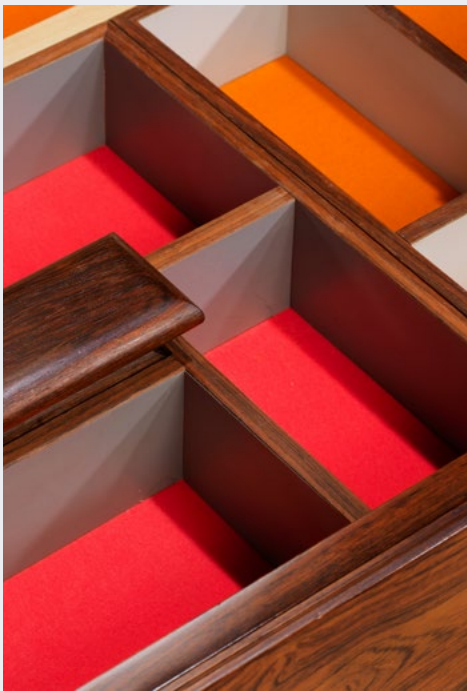
21.65 H × 196.61  
× 23.62 inches  
55 H × 499.4 × 60 cm

Provenance:  
Private commission, Paris











Janine Abraham  
& Dirk Jan Rol

---

*KR5 Ceiling Lamp*, c. 1960

---

Mahogany, satin glass

---

3.94 H × 20.87 D inches

---

10 H × 53 D cm

---

Edition Disderot

---







### KR5

Lustre en bois massif  
(acajou, teck, palissandre).  
verrerie plane satinée  
supportée par 3 griffes

### 3106

Lustre à contrepoids,  
réflecteur laqué noir, vasque en altuglas  
poignée chromée

### F12 F15

Lustre carré en aluminium oxydé  
naturel ou noir,  
paralume laqué blanc

KR5

F12

3106

Michel Guino

---

*La Nouvelle Eve*

---

Welded copper

---

40.16 H × 7.48

× 8.66 inches

102 H × 19 × 22 cm

---

Signed and dated  
on piece

---

Unique work

---

**Provenance:**

Private collection, France

Galerie Diderot (Marcel Zerbib), Paris

Collection Jean Serge Bourgoïn, Paris

---

**Exhibited:**

*Sculptures*. 1958,

Galerie Claude Bernard, Paris.

---

**Literature:**

Jaquer, Edouard. *Poétique*

*de la Sculpture, Sculpture 1950-1960*.

Paris, Éditions Georges Fall, Coll.

Le Musée de Poche, 1958, p. 52. Print.

---



TEFAF Maastricht

June 24 – 30, 2022



TEFAF Maastricht

June 24 – 30, 2022



Daniel Isaac Spoerri

*Objet dans l'Espace*, 1982

Mixed media

18.11 H × 32.28

× 13.78 inches

46 H × 82 × 35 cm

Provenance:

Collection Marianne  
& Pierre Nahon, France





Joseph-André Motte

*Light Table*, 1958

Lacquered wood,  
palisander, opaline glass

12.99 H × 55.12

× 27.56 inches

33 H × 140 × 70 cm

Edition Charron

**Exhibited:**

*Mobi Boom: L'explosion du design  
en France 1945-1975.*

23 Sep. 2010 - 2Jan. 2011,

Musée des Arts Décoratifs, Paris.

**Literature:**

Forest, Dominique. *Mobi Boom :*

*L'explosion du design en France 1945-  
1975*, Les Arts Décoratifs, Paris, 2010.

Similar example reproduced p. 209. Print.









Joseph-André Motte

*J-2 Floor Lamp*, c. 1951

Mahogany, lacquered  
metal, original shade

63.39 H × 21.65 D inches

161 H × 55 D cm

Edition Disderot



TEFAF Maastricht

June 24 – 30, 2022





TEFAF Maastricht



June 24 – 30, 2022

Joseph-André Motte

*Directional Desk*, 1966

Satinwood, painted  
plywood, smoked glass

29.53 H × 86.61

× 31.89 inches

75 H × 220 × 81 cm

Provenance:

Public commission











Marc Held

*Desk Lamp*, c. 1968

Chromed metal, marble

23.23 × 26.77

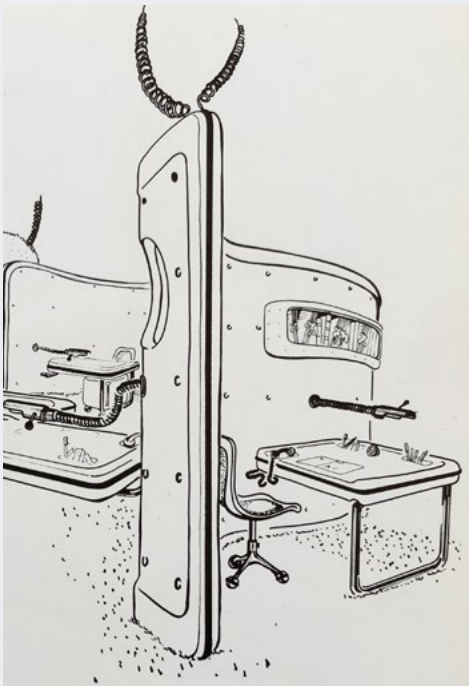
× 9.45 inches

59 H × 68 × 24 cm

**Literature:**

Germain, Eric. *Marc Held: Du Design à l'Architecture*. Paris, Éditions Norma, 2009, pp. 91, 92, 96. Print.







Antoine Philippon  
and Jacqueline Lecoq

---

'Confort' Desk Chair,  
Model 3001, 1964

---

Cast aluminum,  
molded plywood,  
veneer, foam, fabric

---

33.7-36.6 H × 24.21  
× 24.02 inches  
85.5-93 H × 61.5 × 61 cm

---

Seat height:  
17.3-20.5 inches  
(44-52 cm)

---

Edition  
Les Huchers-Minvielle

---

#### Literature:

Forest, Dominique. *Mobi Boom :  
L'Explosion du Design en France 1945  
-1975*. Paris, Les Arts Décoratifs,  
2010, Similar examples reproduced  
p. 160. Print.

Danant, Stephane. *Antoine Philippon  
and Jacqueline Lecoq*. Translated  
by Elizabeth G. Heard, New York,  
Demisch Danant, 2011, Similar  
examples reproduced pp. 63-65. Print.

---









Eugène Leroy

---

*Untitled*, 1936

---

Pen on paper

---

6.69 H × 8.27 inches

17 H × 21 cm

---

Signed and  
dated lower right

---

Certificate of  
authenticity available.

---



Eugène Leroy

---

*L'Âtre*, 1954

---

Oil on mounted canvas

---

40.55 H × 33.07 × 1.57 inches

103 H × 84 × 4 cm

---

Signed and dated

1956 lower right

---

Signed, titled, and

dated 1954 en verso

---

**Provenance:**

Private collection, Roubaix, France.

---

**Exhibited:**

*Eugène Leroy / Jacques Bornibus: Une Complicité, la Peinture, Années 50.* 19 Jun - 12 Sep. 2004, Musée des Beaux Arts de Tourcoing, France. *Eugène Leroy - Exposition du Centenaire.* 10 Oct. 2010 - 31 Mar. 2011, Musée des Beaux Arts Eugène Leroy, Tourcoing, France.

---

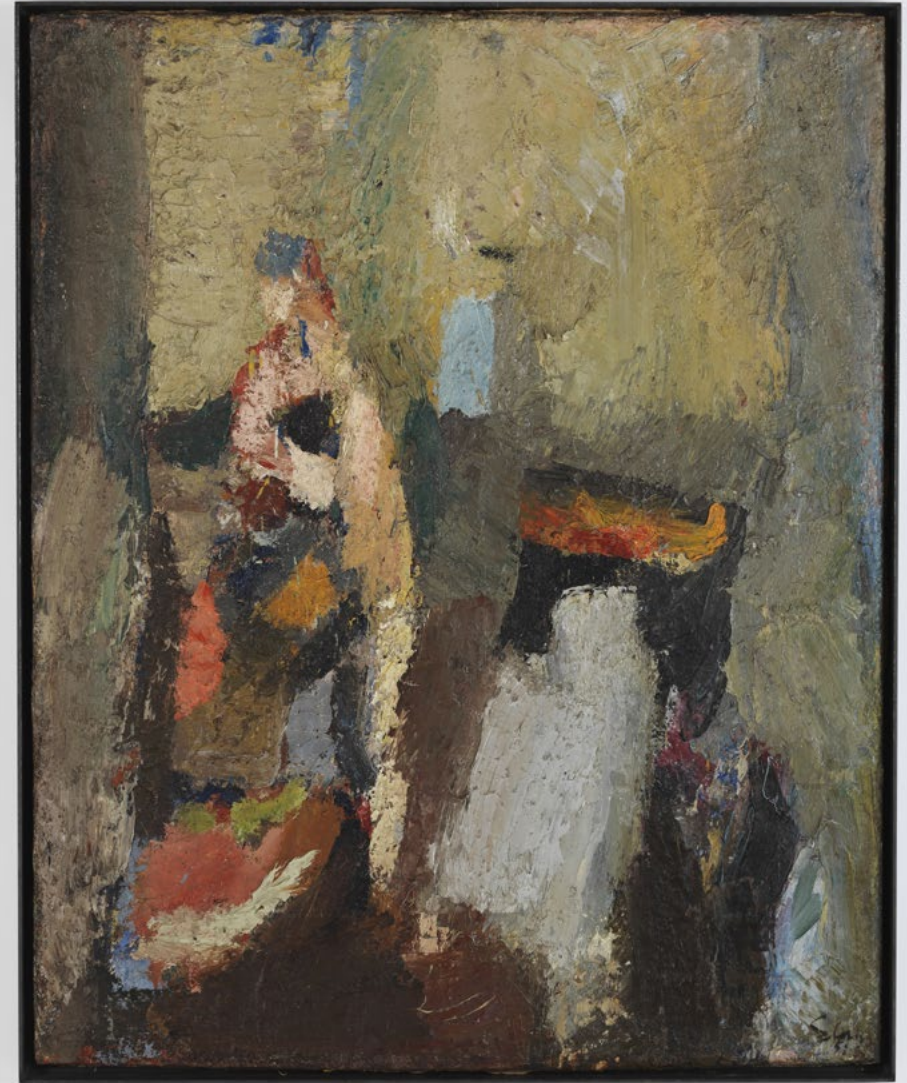
**Literature:**

Allemand, Evelyne-Dorothée, et al. *Eugène Leroy, Jacques Bornibus: Une Complicité, la Peinture, Années 50: Un Peintre, un Conservateur, un Musée.* Tourcoing, Musée des Beaux Arts, 2004, p. 27, 70. Cat. 26. Print. *Eugene Leroy - Exposition du Centenaire.* Exhibition catalogue. Paris, Éditions Hazan, 2010, p. 140. Print.

---

**Certificate of authenticity available.**

---



Eugène Leroy

*Bouquet Valentine*, 1956

Oil on canvas

33.86 H × 1.18

× 16.54 inches

86 H × 3 × 42 cm

Signed, titled,  
and dated en verso

**Provenance:**

Private collection, Roubaix, France.

**Exhibited:**

*Eugène Leroy / Jacques Bornibus:*

*Une Complicité, la Peinture, Années 50.*

19 Jun - 12 Sep. 2004, Musée des

Beaux Arts de Tourcoing, France.

**Literature:**

Allemand, Evelyne-Dorothée, et al.

*Eugène Leroy, Jacques Bornibus: Une*  
*Complicité, la Peinture, Années 50:*

*Un Peintre, un Conservateur, un*

*Musée.* Tourcoing, Musée des Beaux  
Arts, 2004, p. 54. Print.

**Certificate of  
authenticity available.**





Eugène Leroy

*Untitled (Maternity)*, c. 1959

Oil on canvas

39.37 H × 31.89 inches

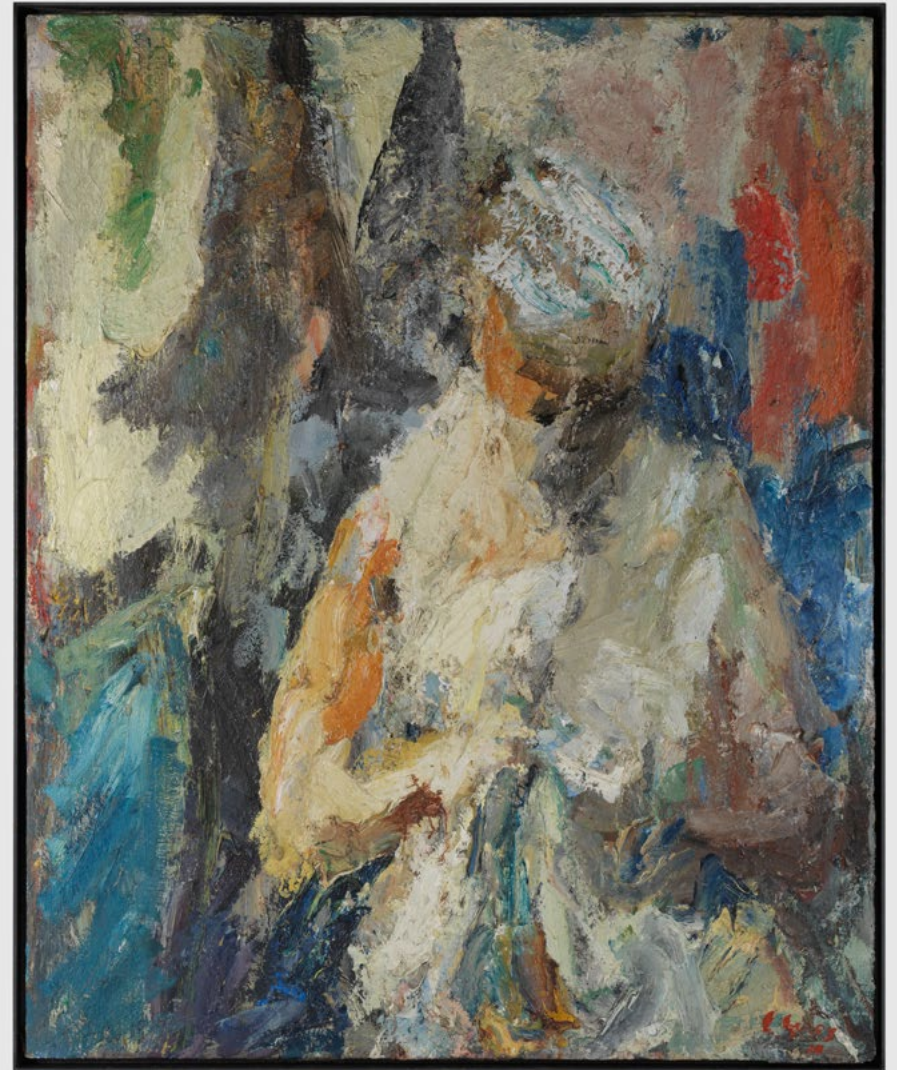
100 H × 81 cm

Signed and dated  
lower right

Provenance:

Private collection, Bussels.

Certificate of  
authenticity available.



Eugène Leroy

---

*Maison au Toit  
Rouge*, c. 1950s

---

Oil on canvas

---

19.69 H × 23.62 inches

50 H × 60 cm

---

Signed lower right

---

Provenance:

Private collection, Belgium.

---

Certificate of  
authenticity available.

---





Eugène Leroy

---

*Deux Arbres*, 1962

---

Oil on canvas

---

76.77 H × 51.18 inches

195 H × 130 cm

---

**Provenance:**

Collection Simone  
and André Droulez, Reims, France

---

**Exhibited:**

*Eugène Leroy*. April 1963,  
Galerie Claude Bernard, Paris.

*Eugène Leroy*. 1963,  
Galerie André Droulez, Reims.

---

**Literature:**

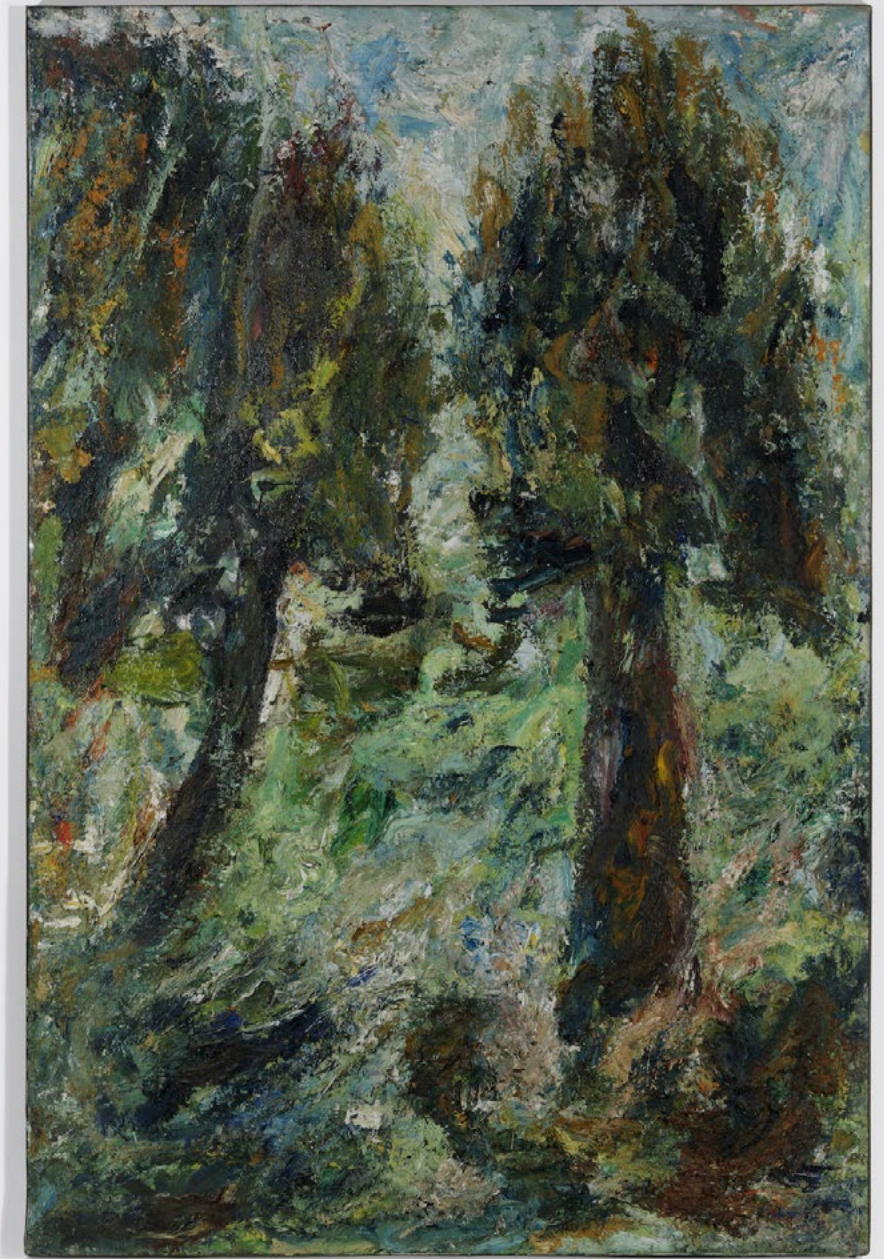
*Eugène Leroy*. Galerie Claude  
Bernard, Paris, April 1963,  
lot number 15. Print.

*Eugène Leroy*. Galerie André Droulez,  
Reims, 1963, work number 5. Print.

---

**Certificate of  
authenticity available.**

---







14, 15



Eugène Leroy

---

*Untitled*, 1968

---

Oil on canvas

---

25.59 H × 21.26 inches

65 H × 54 cm

---

Signed and dated lower  
right “E. Leroy 68”

---

Provenance:

Galerie Daniel Templon, Paris

Private collection

---

Certificate of  
authenticity available.

---





Eugène Leroy

---

*Untitled*, c. 1970

---

Gouache on paper

---

85.04 H × 2.95

× 65.75 inches

216 H × 7.5 × 167 cm

---

Unframed:

78 H × 59 inches

(198 H × 150 cm)

---

Provenance:

Private collection, Lille, France

Yves-Loup Bourdoncle, Roubaix,  
France

---

Exhibited:

*Eugène Leroy, Oeuvres sur Papier.*

25 June - 19 Oct. 2010, Galerie Bruno  
Mory, Bonnay, France.

*Peintures, Gouaches et Dessins:*

*Robert Guinan, Eugène Leroy, Charles  
Mansion.* June - 28 Sept. 2014, Centre  
d'Art Contemporain, Château de  
Tanlay, Yonne, France.

---

Certificate of  
authenticity available.

---





# About Demisch Danant

Demisch Danant was founded in 2005 by Suzanne Demisch and Stephane Danant. The gallery specializes in twentieth-century French design with an emphasis on the late 1950s through the 1970s and represents the work of Maria Pergay, Pierre Paulin, Jacques Dumond, Joseph-André Motte, Pierre Guariche, Michel Boyer, Philippon & Lecoq and René-Jean Caillette.

Curated exhibitions on historical work are presented within environments that reference architecture and interiors of the era.

The gallery also features exhibitions concerning the intersection of architecture, design and art, including the work of Sheila Hicks and César.

Demisch Danant is dedicated to research and scholarship on French design and has published and authored monographs including *Antoine Philippon and Jacqueline Lecoq*, *Maria Pergay: Complete Works 1957-2010*, *Maria Pergay by François Halard*, and *Maria Pergay: Sketch Book*. Current projects include a comprehensive monograph on seminal designer Joseph-André Motte and a new book about works by Sheila Hicks commissioned for architectural projects.

30 W 12th St New York  
T +1 212 989 5750  
[www.demischdanant.com](http://www.demischdanant.com)