



Demisch Danant
X Paulin, Paulin, Paulin

with the participation
of the Mobilier National

FORMAL DISRUPTION

Pierre Paulin and the State
commissions of the 1980s

April 27
— May 27, 2023

Pierre Paulin

French 1927-2009



Pierre Paulin trained to be a sculptor but injured his right arm forcing him to switch gears to design and study at Ecole Camondo in Paris. He is perhaps best known for his innovative designs for Dutch company Artifort of the 1960s famed Mushroom Chair (1959), the Ribbon Chair (1966) and the Tongue chair (1968) that used foams and metallic frames with stretch materials and clear lines that cradled the body. Paulin was also highly influential and involved in French design through the 1970s. Clearly influenced by his training as a sculptor and his German roots as well as the work of early modernists, Paulin was even more impacted by the work of George Nelson and Charles Eames and the significance of the social component of modern design. Most notably, Paulin was invited by the Mobilier National in 1970 to decorate the private apartments of President George Pompidou in the Palais de l'Elysee, and to furnish the office of President Francois Mitterrand in 1983. He also redesigned the interiors of numerous private and public spaces including the Denon Wing of the Louvre Museum, the hall of Tapestries in Paris City Hall, the Economic and Social Council assembly room, and the Green Room of the state radio's Broadcasting House («Maison de la Radio»). What makes Paulin's designs so distinctive is their striking sculptural shape, which earned Paulin many prizes worldwide. Paulin's designs are timeless and progressive and in November 2009 he was posthumously awarded the distinction of "Royal Designer for Industry" (RDI) by President Nicolas Sarkozy. In 2016, a retrospective of his work was on view at Centre Pompidou, Paris.

Awards

Royal Designer for Industry (RDI)

Collections

The Museum of Modern Art, New York
Musée des Arts Décoratifs, Paris
Victoria & Albert Museum, London
Centre Georges Pompidou, Paris

Pierre Paulin

President Mitterrand Desk,
1985

Lacquered aluminum,
lacquered wood, leather

29.53 H x 86.61
x 43.31 inches

75 H x 220 x 110 cm

Edition 1 of 30

Provenance:

Prototyped with the Mobilier National,
Édition Paulin, Paulin, Paulin





Formal Disruption





Pierre Paulin

President Mitterrand Desk
Chair, 1985

Amaranth wood, caning,
foam, wool

23.62 H x 41.34
x 27.95 inches

60 H x 105 x 71 cm

Seat height:
18.1 inches (46 cm)

Edition 1 of 30

Provenance:

Prototyped with the Mobilier National,
Édition Paulin, Paulin, Paulin







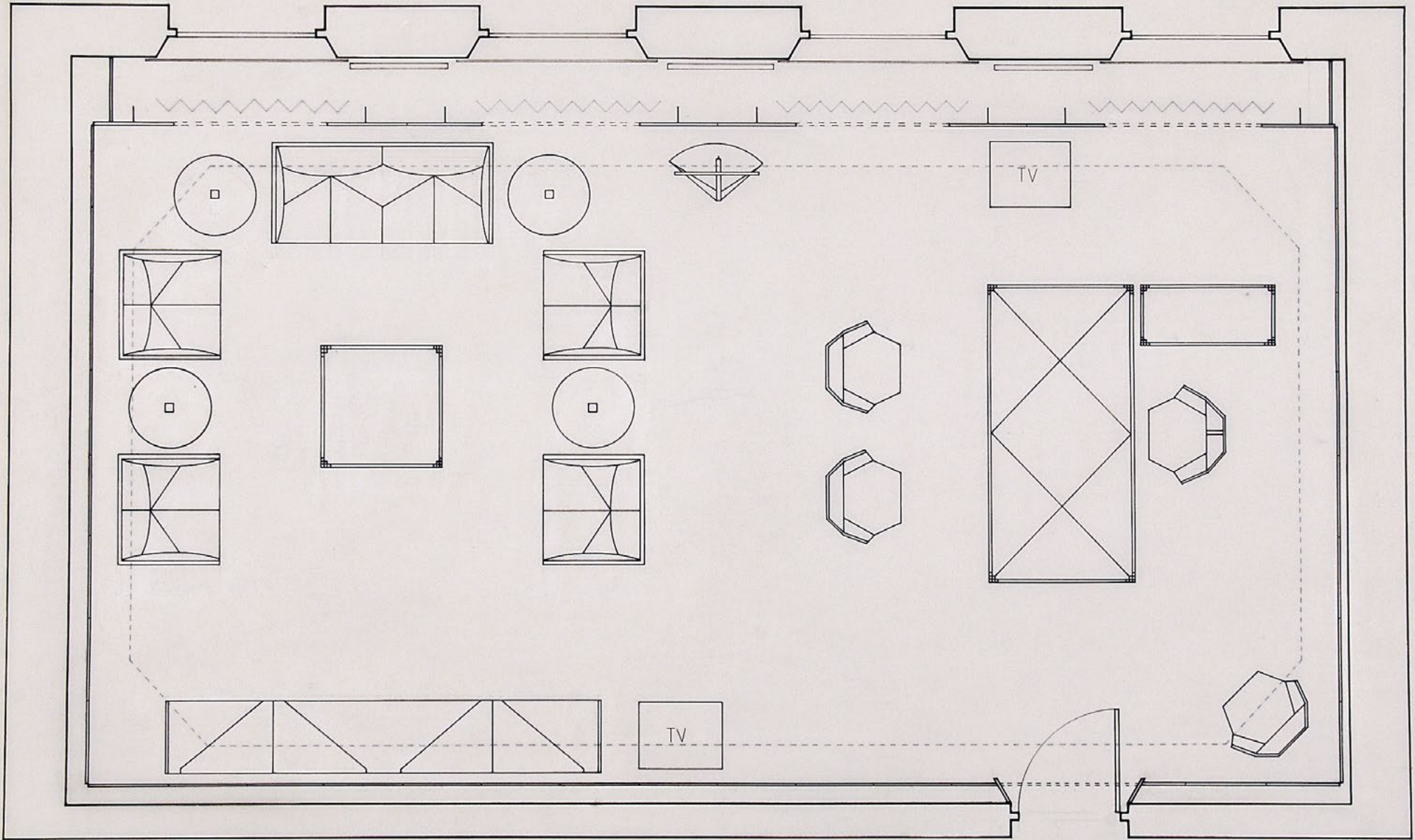
François Mitterrand's office at the Élysée Palace, 1984-1991

Formal Disruption



François Mitterrand's office at the Élysée Palace, 1984-1991

Formal Disruption



IMPLANTATION 1

François Mitterrand's office at the Élysée Palace, 1984-1991

Formal Disruption

Salle de visionnement

Pierre Paulin

Pair of Salon Mitterrand
Armchairs, 1985

Lacquered wood, foam,
fabric

24.8 H x 33.46
x 26.77 inches

63 H x 85 x 68 cm

Seat height:
17.3 inches (44 cm)

Edition 1&2

Provenance:

Prototyped with the Mobilier National,
Édition Paulin, Paulin, Paulin,

Numbered edition





Pierre Paulin

Salon Mitterrand Sofa, 1985

Lacquered wood, foam,
fabric

29.13 H x 61.42
x 32.28 inches

74 H x 156 x 82 cm

Seat height:
17.3 inches (44 cm)

Edition 1

Provenance:
Prototyped with the Mobilier National
Édition Paulin, Paulin, Paulin,

Numbered edition





Pierre Paulin

Salon Mitterrand Low Table,
1985

Lacquered aluminum,
lacquered wood, leather

17.72 H x 45.28
x 45.28 inches

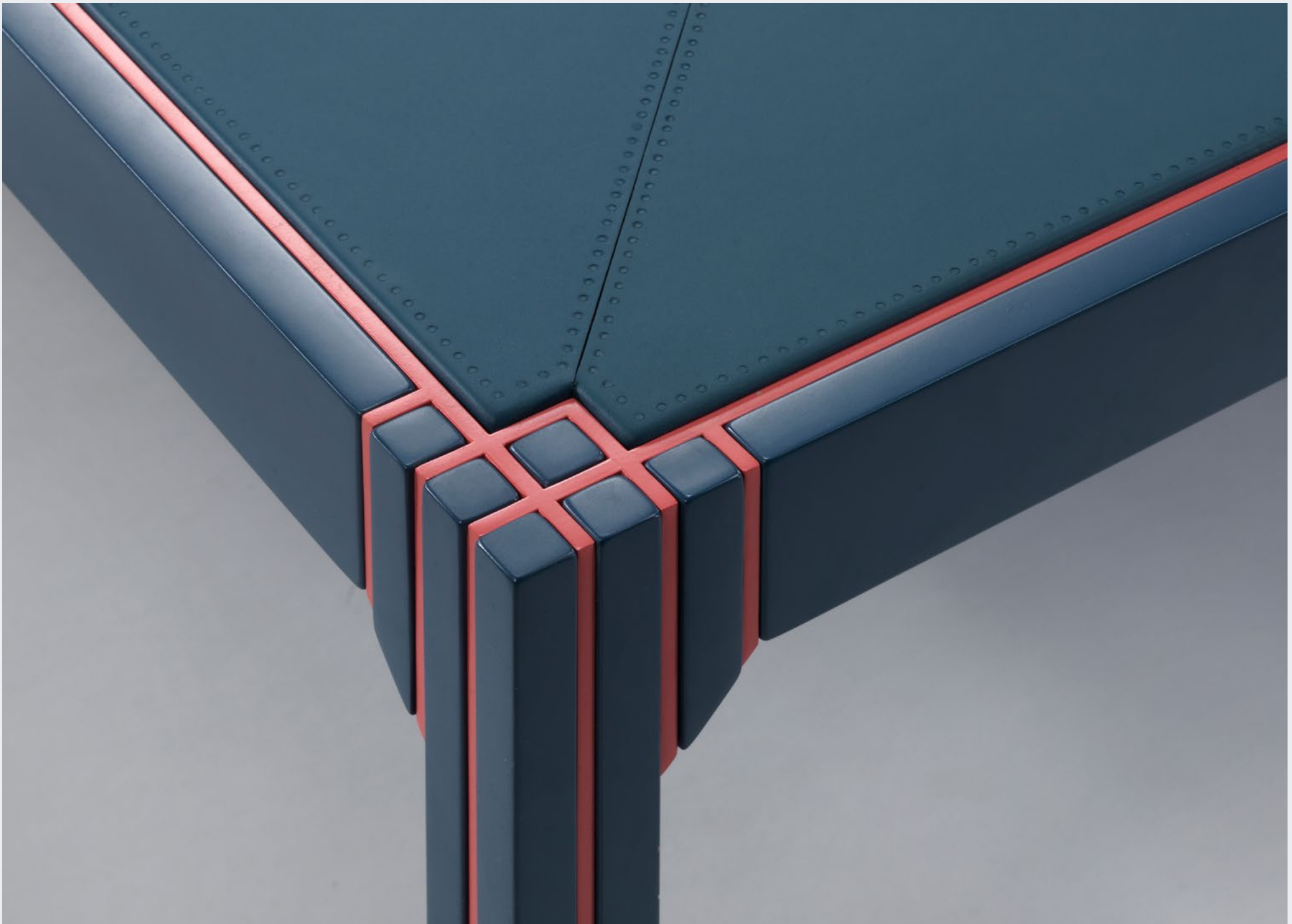
45 H x 115 x 115 cm

Edition 1 of 30

Provenance:

Prototyped with the Mobilier National,
Édition Paulin, Paulin, Paulin







Pierre Paulin

Pair of Léna Armchairs,
1985/ 2015

Sycamore, wood, foam,
fabric

40.75 H x 33.07
x 28.15 inches

103.5 H x 84 x 71.5 cm

Seat height:
16.5 inches (42 cm)

Provenance:
Édition Paulin, Paulin, Paulin,

Numbered edition







Pierre Paulin

Cathedral Table, 1982

Natural aluminum, glass

29.13 H x 59.06
x 59.06 inches

74 H x 150 x 150 cm

Edition 4 of 12

Provenance:

Prototyped with the Mobilier National,
Édition Paulin, Paulin, Paulin

Limited Edition of 12





Pierre Paulin

Cathedral Low Table, 1982

Painted aluminum, glass

11.81 H x 47.24
x 47.24 inches

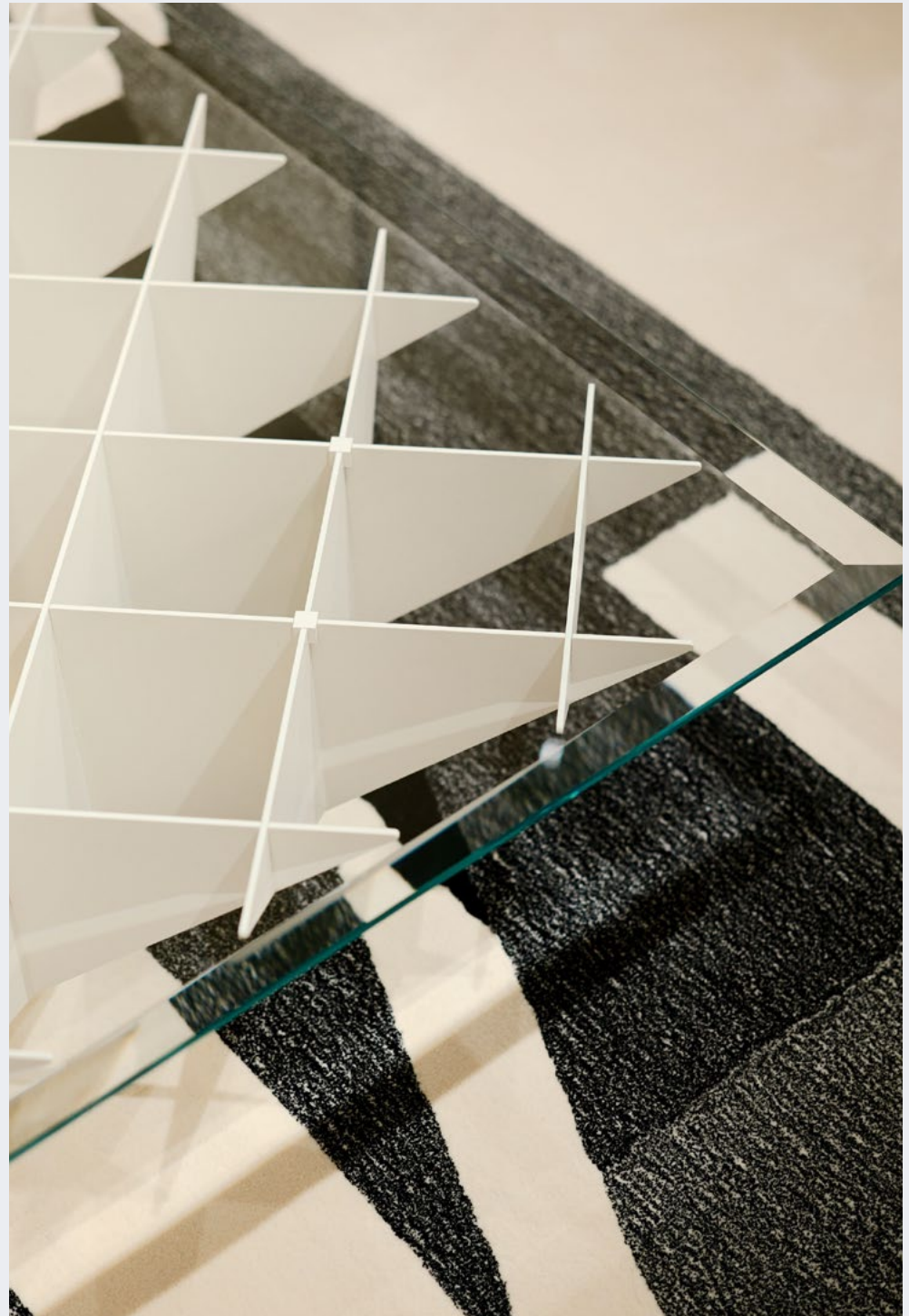
30 H x 120 x 120 cm

Provenance:

Prototyped with the Mobilier National,
Édition Paulin, Paulin, Paulin

Limited Edition of 12





Pierre Paulin

Chaise à Palmette, 1981

Lacquered wood,
caned seat

35.04 H x 22.44
x 16.93 inches

89 H x 57 x 43 cm

Seat height:
18 inches (45.72 cm)

Limited Edition Pierre Paulin

SARL Manufactured
by Ségransan

Inscribed and numbered:
«Pierre Paulin 005»

Provenance:

Inscribed: «MOBILIER NATIONAL
/A. R.C.»



Pierre Paulin

Amaranth Chair, 1981

Amaranth wood, caned seat

29.53 H x 21.65
x 17.32 inches

75 H x 55 x 44 cm

Seat height:
17.7 inches (45 cm)

Limited Edition Pierre Paulin

SARL Manufactured
by Ségransan

Inscribed and numbered:
«Pierre Paulin 018»

Provenance:
Inscribed: «MOBILIER NATIONAL
/A. R.C.»





Pierre Paulin

Console Table, 1981

Amaranth wood, glass, brass

27.56 H x 28.35
x 28.35 inches

70 H x 72 x 72 cm

Unique work



Pierre Paulin

Ensemble Chirac Sectional
Sofa, 1985/ 2023

Wood, foam, fabric

31.5 H x 183.86
x 183.86 inches

80 H x 467 x 467 cm

10 modules:
< 31 W inches (79 W cm)

Provenance:
Édition Paulin, Paulin, Paulin





Formal Disruption





Pierre Paulin

Low Table, 1985

Amaranth wood marquetry,
lacquered wood

19.09 H x 14.57
x 52.76 inches

48.5 H x 37 x 134 cm

Unique work

Manufactured by Ségransan





Pierre Paulin

Art Deco Dining Table, 1984

Birdseye maple, walnut

30 H x 121.25 x 50 inches

76.2 H x 308 x 127 cm

Edition Baker Furniture





Formal Disruption



Pierre Paulin

Desk, 1984

Birdseye maple, walnut,
leather

28.82 H x 72.05
x 36.02 inches

73.2 H x 183 x 91.5 cm

Edition Baker



Baker Furniture

Paulin Collection



Pierre Paulin

Diwan Rug, 1991/ 2023

Wool

212.6 x 141.73 inches

540 x 360 cm

Hand-tufted at Aubusson

Provenance:

Prototyped with the Mobilier National,
Édition Paulin, Paulin, Paulin

Based on a 1985 design for a stone garden at the Palais Royal for a competition won by Daniel Buren's columns in 1986.

Edition of 12





Pierre Paulin's living room in his house in the Cevennes
Formal Disruption

Pierre Paulin

Tapis Siège, 1972/ 2014

Lacquered wood, foam,
fabric

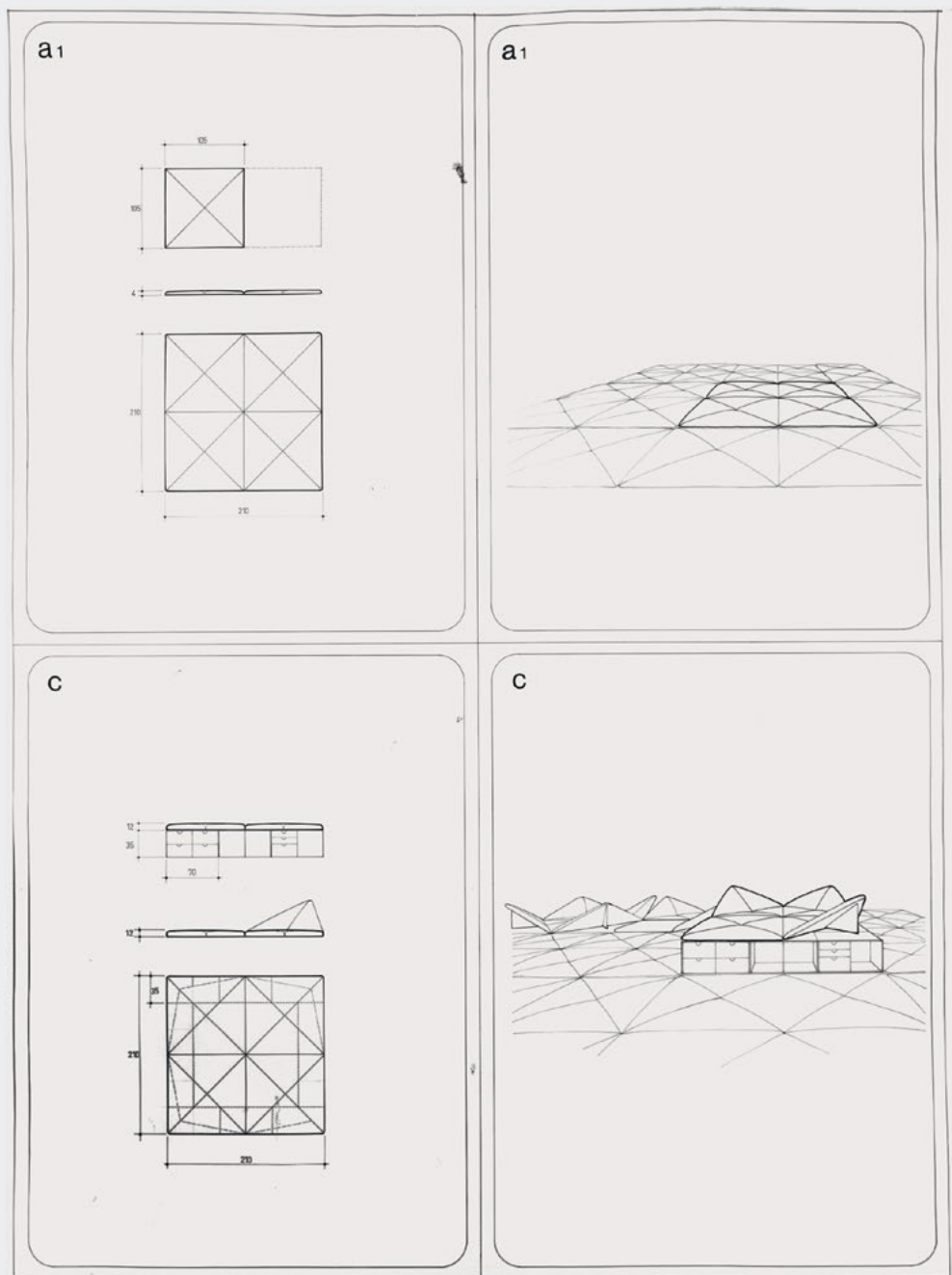
31.5 H x 82.68

x 82.68inches

80 H x 210 x 210 cm







About Demisch Danant

Demisch Danant was founded in 2005 by Suzanne Demisch and Stephane Danant. The gallery specializes in twentieth-century French design with an emphasis on the late 1950s through the 1970s and represents the work of Maria Pergay, Pierre Paulin, Jacques Dumond, Joseph-André Motte, Pierre Guariche, Michel Boyer, Philippon & Lecoq and René-Jean Caillette.

Curated exhibitions on historical work are presented within environments that reference architecture and interiors of the era.

The gallery also features exhibitions concerning the intersection of architecture, design and art, including the work of Sheila Hicks and César.

Demisch Danant is dedicated to research and scholarship on French design and has published and authored monographs including Antoine Philippon and Jacqueline Lecoq, Maria Pergay: Complete Works 1957-2010, Maria Pergay by François Halard, and Maria Pergay: Sketch Book. Current projects include a comprehensive monograph on seminal designer Joseph-André Motte and a new book about works by Sheila Hicks commissioned for architectural projects.

30 W 12th St New York
T +1 212 989 5750
www.demischdanant.com